



Medical Education to enhance Shared Decision-Making A Systematic Review

Loh A, Papez A, Boehme K, Duerk T, Niebling W

University Medical Center Freiburg
Dept. General Practice

5th International Shared Decision Conference

June 14-17, 2009

Boston

Background

- The concept of Shared Decision Making is getting increased attention in implementation research
- There are several strategies to transfer SDM into practice
 - development of decision support material
 - patient education
 - health provider education
- A meaningful model for implementing SDM in medical care relates to basic and advanced medical training and continuing medical education
- No widely accepted medical education concept

Research question

Which are the

- target groups,
- didactic methods and
- what are the outcomes of SDM-trainings?

Medline research

Terms:

“Shared Decision Making”

and

“Medical Education” or “Training” or “Teaching”

Inclusion criteria

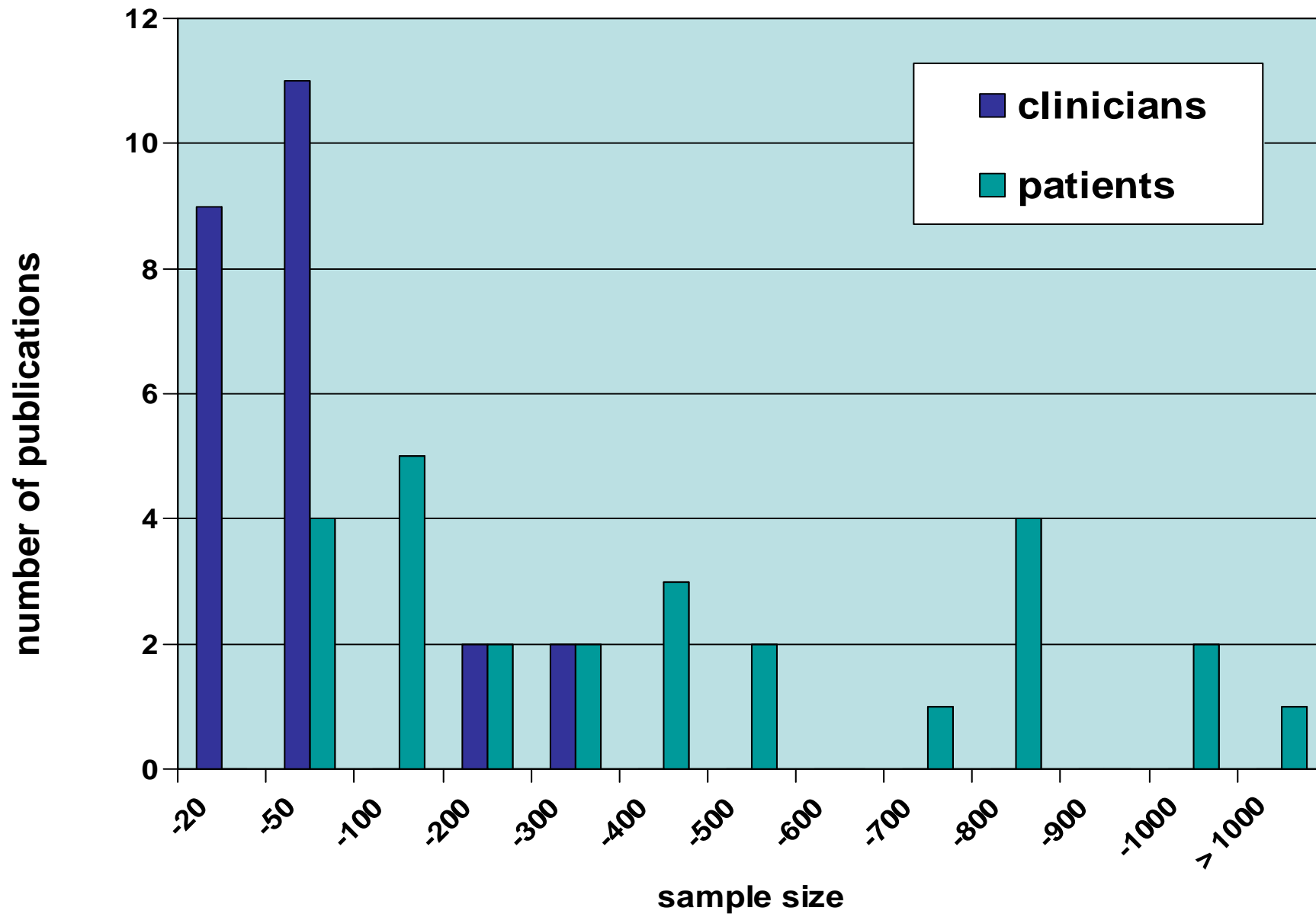
- quantitative and qualitative primary data
- investigations referring to SDM and its implementation in medical education

Double check of research strategy and inclusion criteria

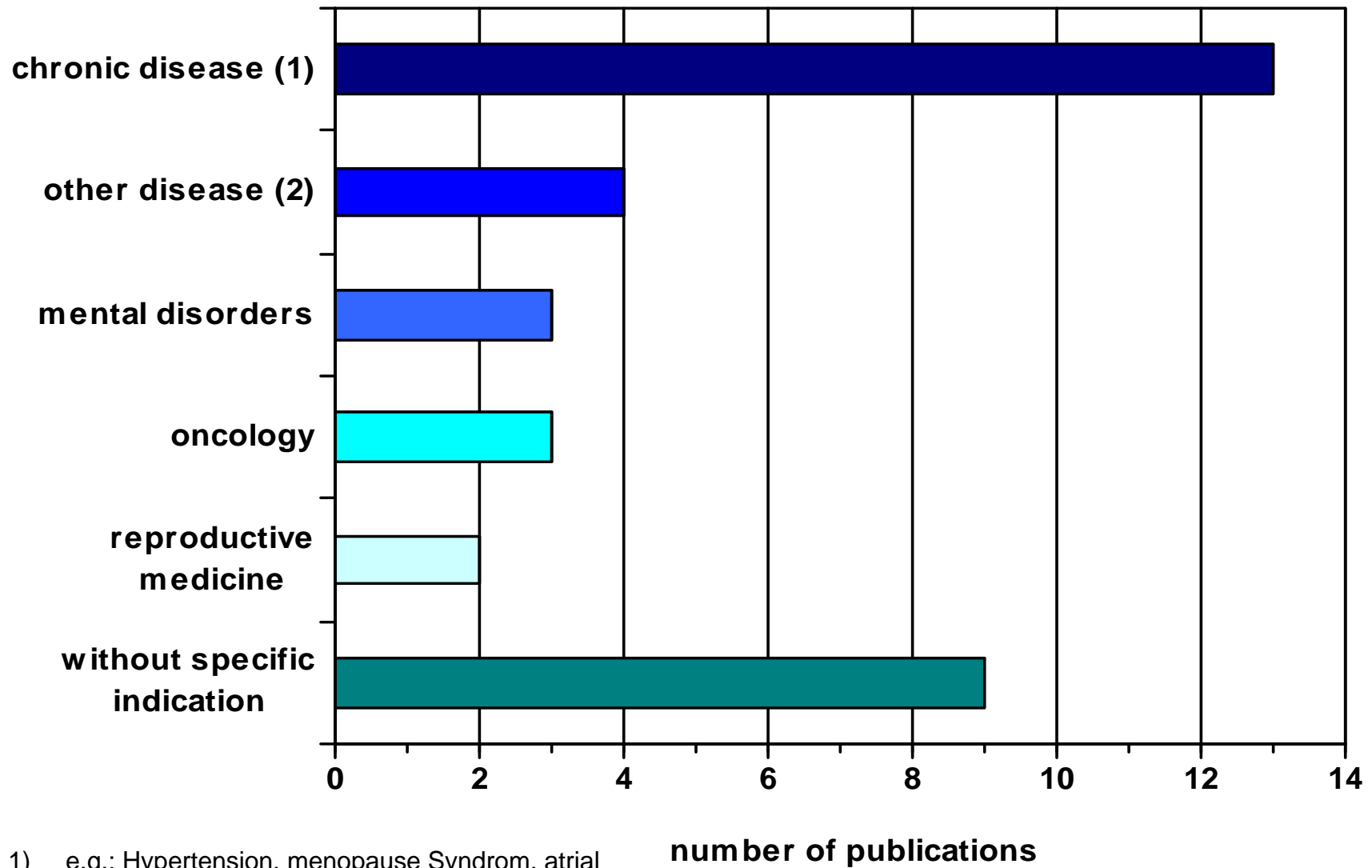
34 publications could be enrolled

- 21 randomized controlled trials (RCT)
- 9 longitudinal uncontrolled studies (BAT)
- 4 qualitative studies

Sample sizes of the studies



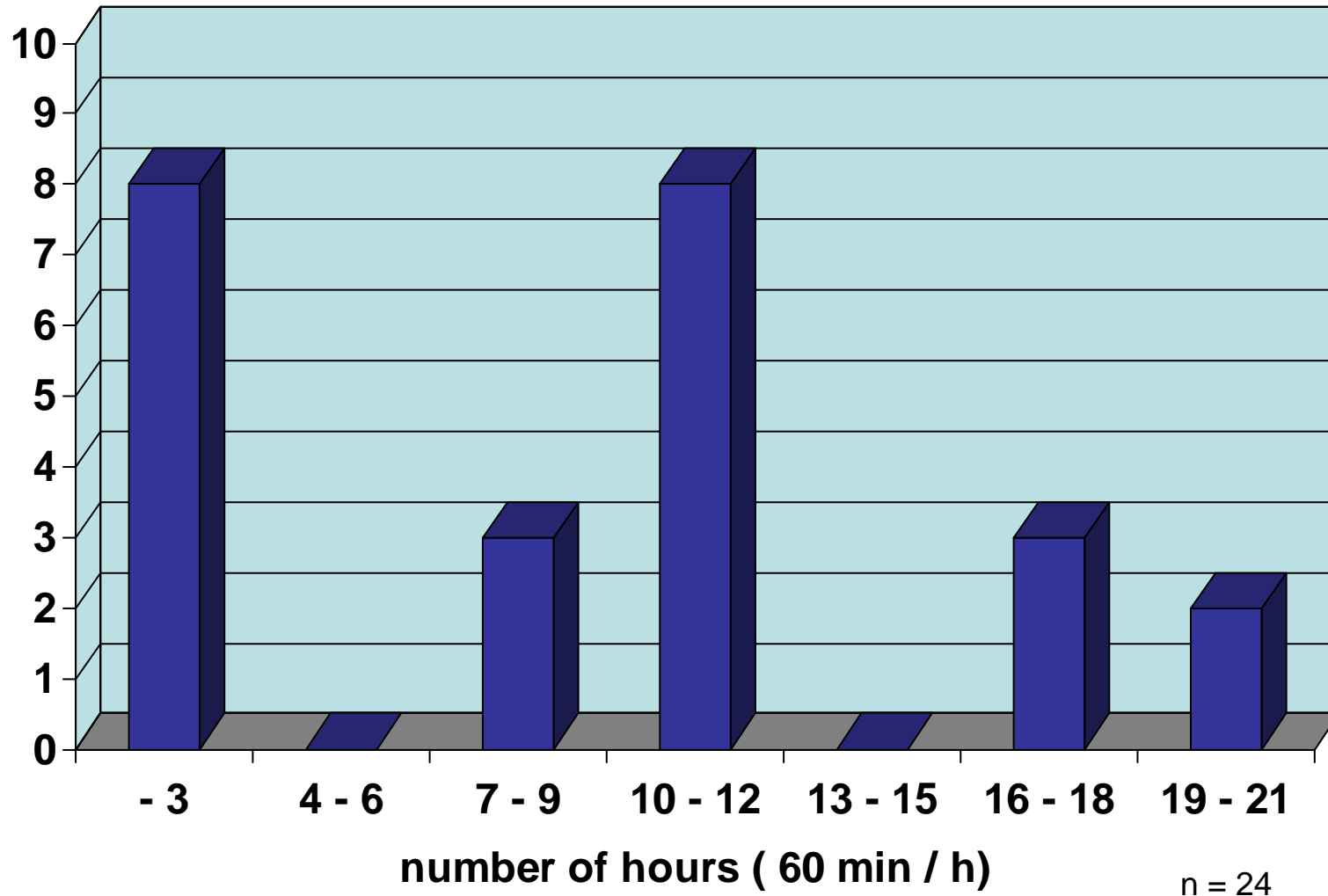
Disease areas



- 1) e.g.: Hypertension, menopause Syndrom, atrial fibrillation, prostate hyperplasia, Fibromyalgia
- 2) dentistry, acute otitis media, acute respiratory disease, sore throat

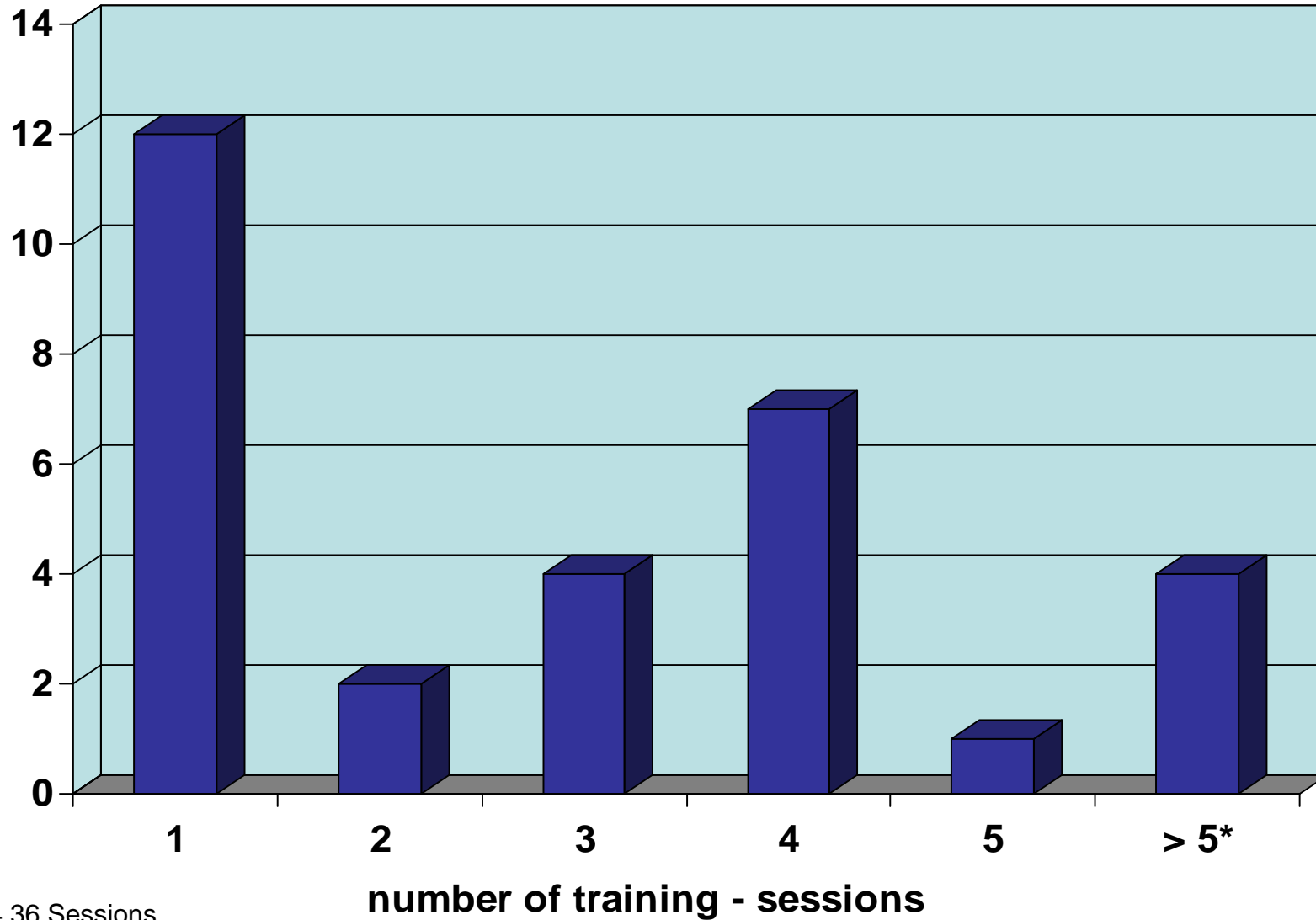
training dose - hours

number of
publications



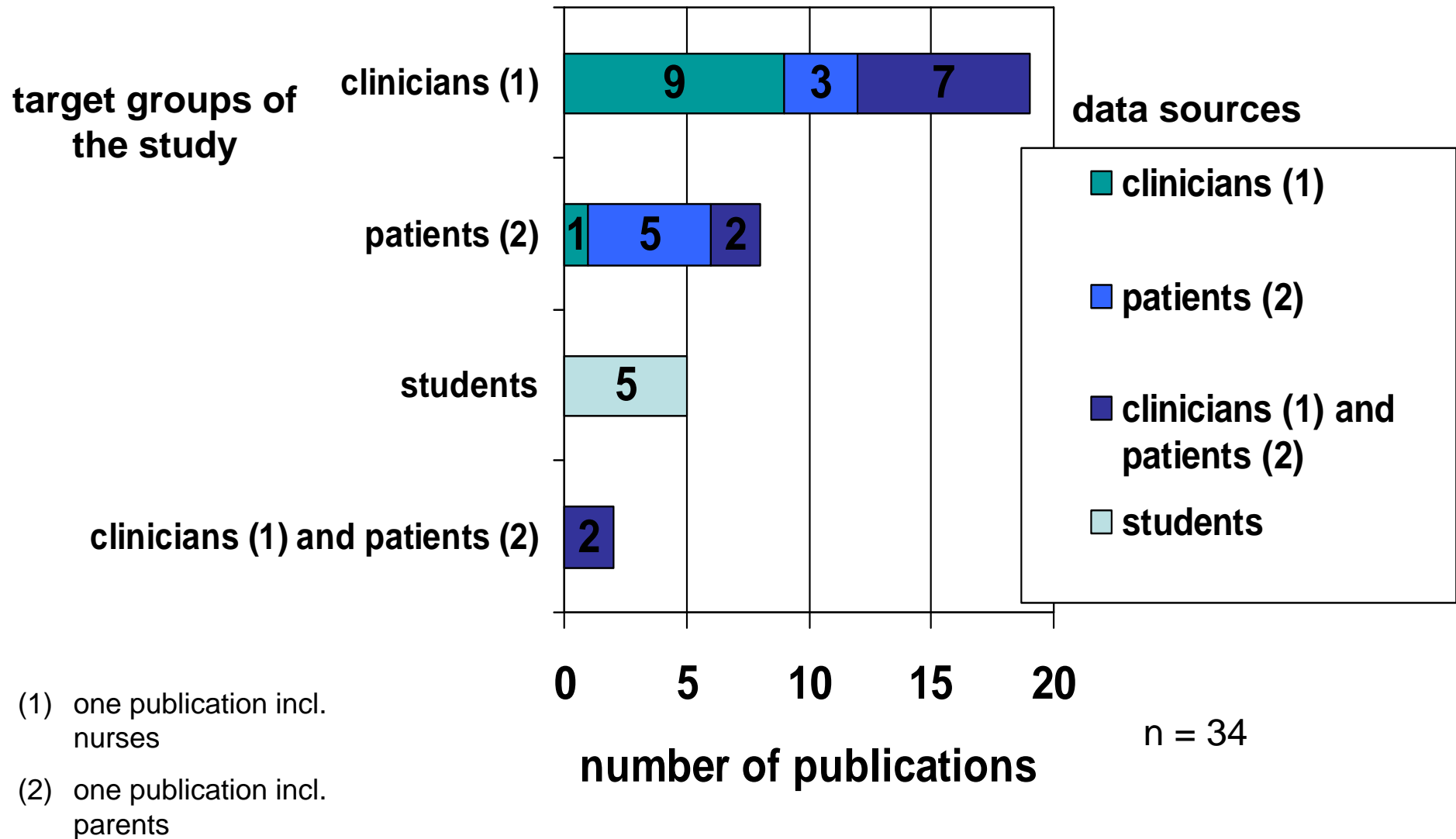
number of
publications

training dose - training sessions

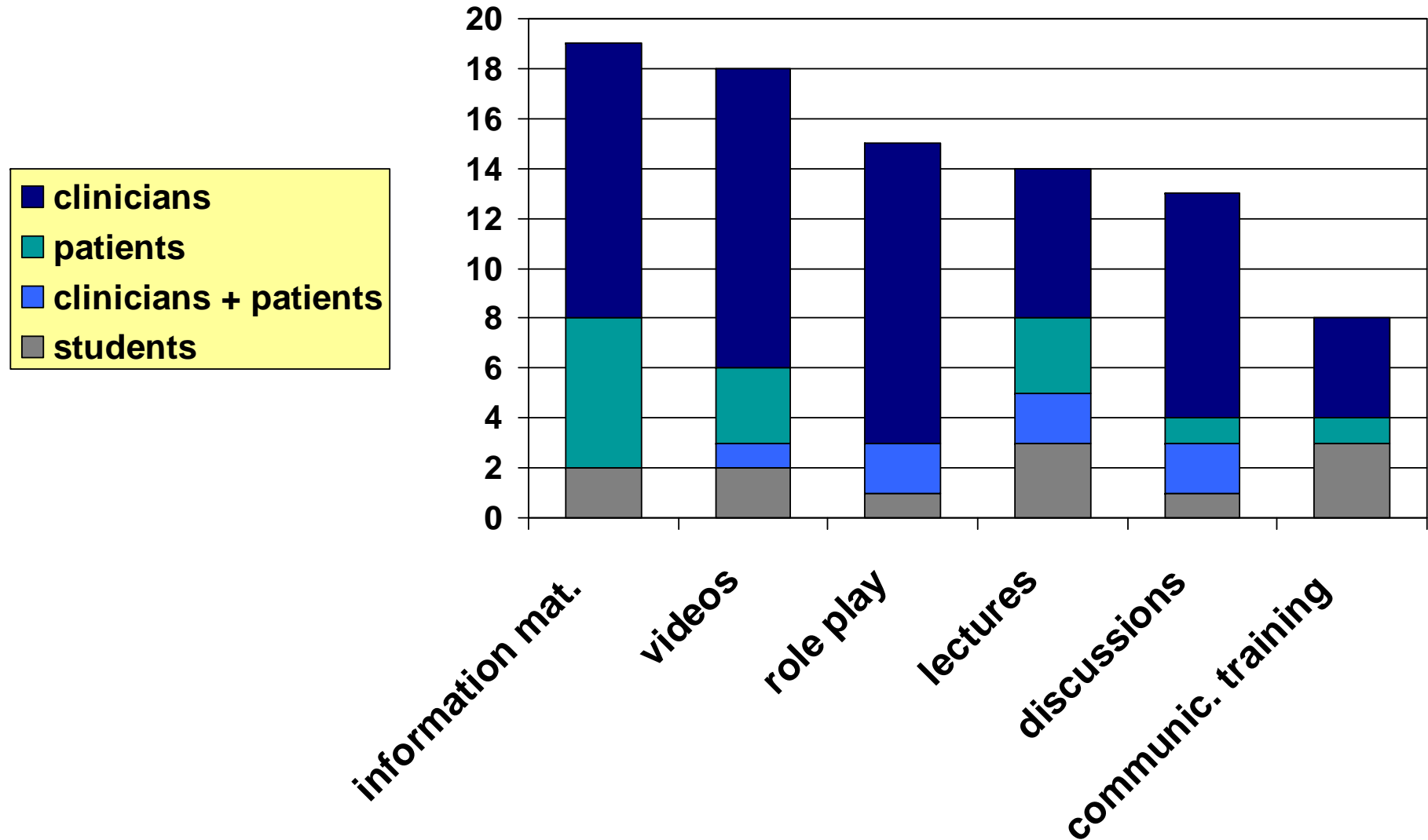


*12,16,24,36 Sessions

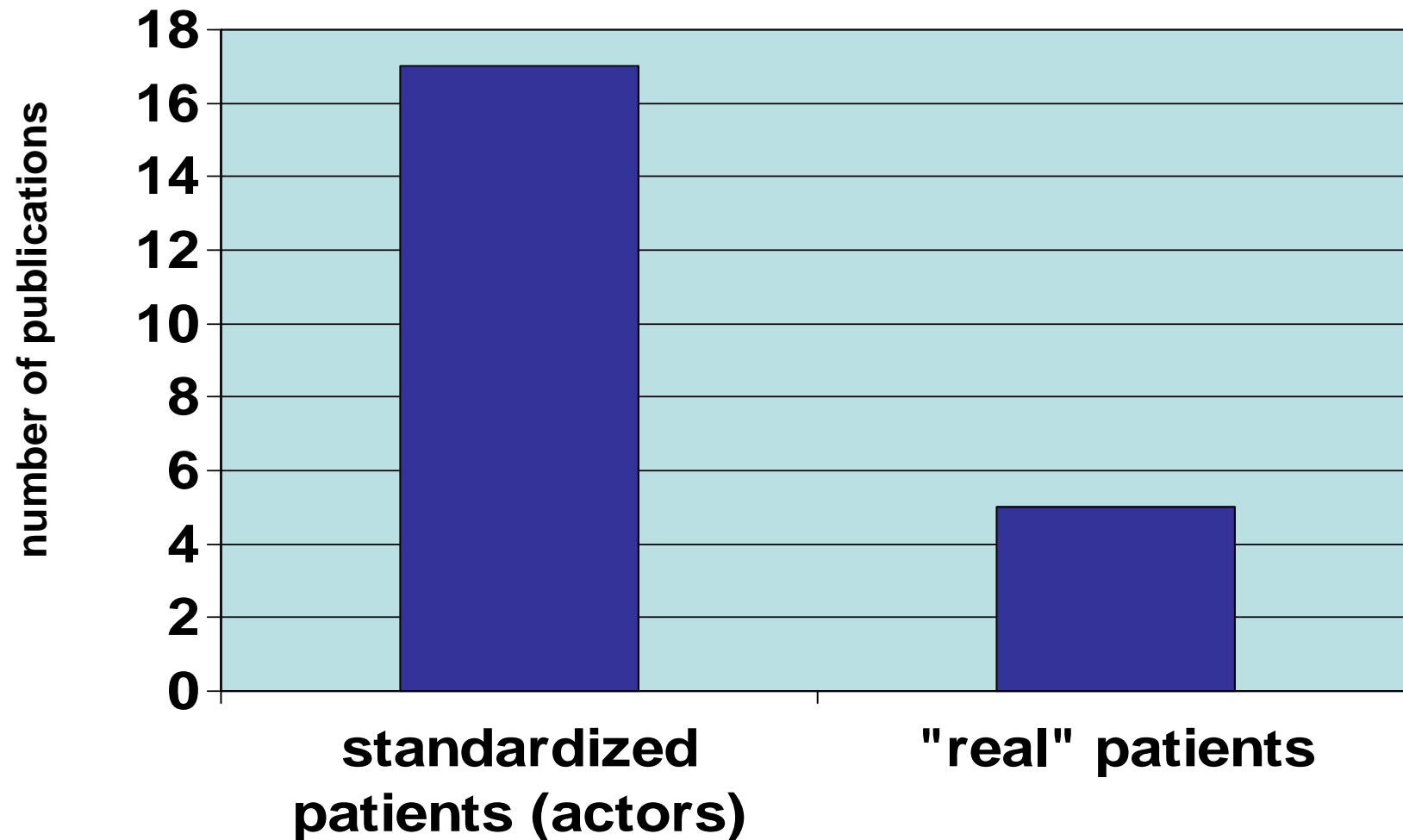
target groups and data sources



Training methods in the studies

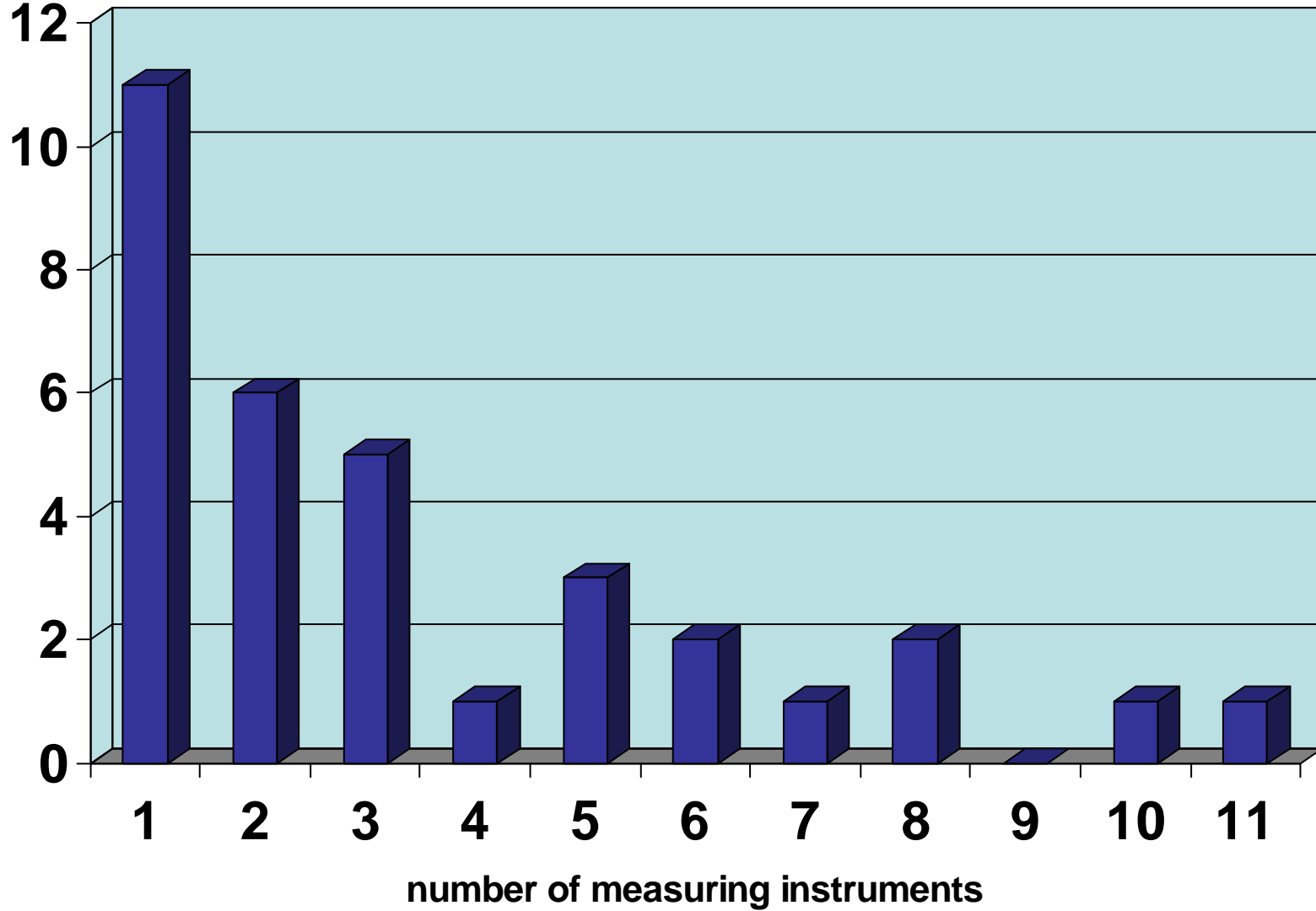


Patients in the trainings (role plays and videos)

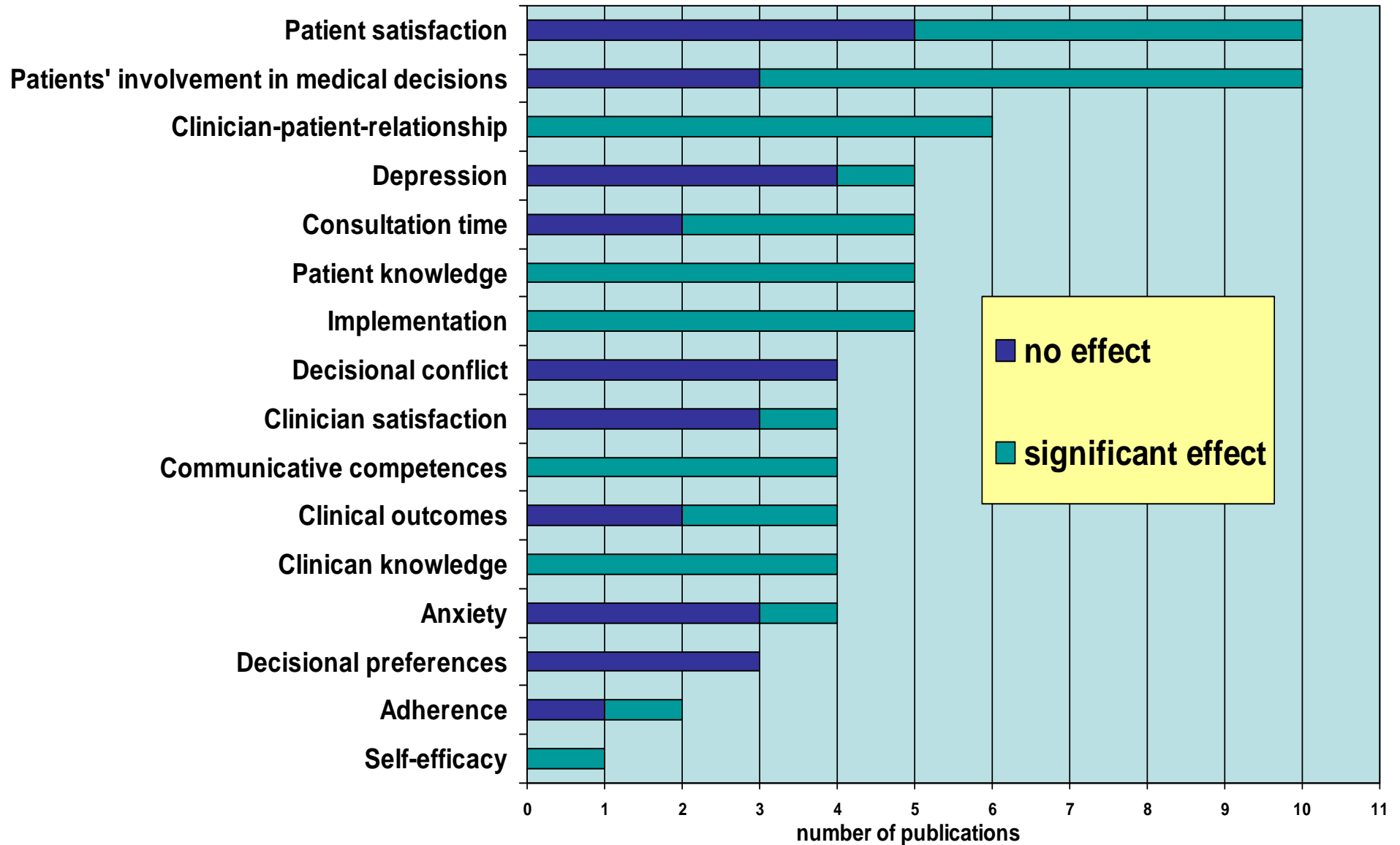


measures

number of
publications



Outcomes of the studies



Conclusion

- huge variability in ...
 - training methods
 - training dose
 - outcome criteria
 - outcomes
- several outcomes might be easier to achieve than others
- need to develop an evidence based SDM-training concept

Thank you for your attention

Andreas.Loh@uniklinik-freiburg.de

